

CULTURAL POLICY

A place for cultural diversity
Summary



Rawdon



A PLACE FOR CULTURAL DIVERSITY



It is with great pride that I present you with Rawdon's first Cultural Policy. It is the result of great teamwork. The committee members were able to identify the needs, gather ideas and innovate by presenting an action plan that will give Rawdon culture a place of honor.

Our municipality knows, supports and appreciates Rawdon's greatly talented artists. This newly adopted policy serves as a working tool for the council, so that the decisions taken reflect our cultural environment.

I would like to thank all of the people who participated directly or indirectly in the development of this policy; your passion and dedication have been indispensable.

Bruno Guilbault

It has been a great privilege for me to participate with the committee and the members of the Department of Recreation and Culture, in the brainstorming that brought forth Rawdon's current cultural policy.

Through these orientations, we wish to provide the citizens of Rawdon with quality artistic and cultural offerings that will be accessible and diversified. We also aspire to sharing and discussions between artists and the community, while highlighting our vibrant heritage and our many natural resources.

I wish to offer my heartfelt thanks to the artists and citizens who care deeply about cultural development and who took part, directly or indirectly, in the Cultural Policy and the resulting action plan.

Josianne Girard, councillor



MEMBERS OF THE CULTURAL POLICY COMMITTEE:

André Lacroix, Audrey Roy Lavallée, Geneviève Chaussé,
The late Florence Hally, Daniel Michaud, David Pelletier, Moïse Piuze, Guillaume Saladin
Isabelle Ménard, Edith Beauséjour, Nathalie Venne
Josianne Girard, Stéphanie Labelle
Andrée St-Georges and Catherine Gaudet of Culture Lanaudière

MEMBERS OF THE CULTURAL ACTION PLAN COMMITTEE:

Marianne Rainville, Alexandre Piuze Gualmini, Sylvie Thifault,
Marie-Christine Rivest, Christian Perreault, Marie-Claire Bouchard

THE CULTURAL POLICY

1.0

THE POSITIONNING OF CULTURE

« The Municipality of Rawdon is taking action by adopting a cultural policy that is bound to the identity and specificities of Rawdon and its citizens. It supports and encourages artistic practices and offers a quality of culture adapted to today's needs and realities. A cultural offer that is a unifying platform and a factor in its citizens' healthy lifestyle. »

Throughout its work, the cultural policy committee was inspired by the following:

- A willingness to make culture part of a **healthy lifestyle**;
- A willingness to **create a strong alliance** between culture and nature;
- A willingness to **recognize artists** who foster culture in Rawdon;
- A willingness to **develop an inclusive community** of artists, that is visible and strong;
- A willingness to **integrate artistic works** throughout the municipality.

2.0

THE GUIDING PRINCIPLES

First and foremost, the aim of Rawdon's Cultural Policy is to serve its citizens.



Promote community access to the arts and culture



Support sharing and exchanges between artists and the community.



Optimize the conservation of all forms of heritage



Demonstrate a constant concern for environmental protection



THE GUIDELINES

IMPROVE, TRANSFORM AND REDEFINE EXISTING BUILDINGS AND PLACES

- a) By creating a significant cultural presence in the Citizen's Quarter.
- b) By asking that, for all constructions and renovations, 1% of the budget be reserved for the integration of a work of art.
- c) By promoting transitory performances in public spaces, parks and non-traditional places in Rawdon.
- d) By preserving the built heritage in the heart of the village.

ENCOURAGE ARTISTS TO TAKE CHARGE OF PUBLIC SPACES

- a) By ensuring that the municipality facilitates the carrying out of projects proposed by artists.
- b) By encouraging the establishment of cultural organizations.

DEVELOP AND ESTABLISH COMMUNITY SPACES FOR CREATING AND SHARING WITH PEERS AND THE GENERAL PUBLIC

- a) By integrating cultural diversity, through all forms of art, in public places.
- b) En rendant disponible à la communauté un ou des lieux de création et de diffusion.

GIVE THE COMMUNITY GREATER ACCESS TO ARTS AND CULTURE BY SETTING UP EXPOSITION AREAS:

- a) By developing a partnership between artists, the municipality and public and private institutions.
- b) By maximizing communication between the community and artists' accomplishments.
- c) By highlighting current and emerging artistic exposition venues like, for example the Citizen's Quarter.
- d) By setting up exposition venues appropriate to the expressed needs.

COLLABORATE

for extending reach



BRING TOGETHER

to enhance creativity



CONNECT

to remember

4.0

THE STAKES



ASSOCIATE

nature and culture

REMOVE

social inequalities through culture



PRESERVE

and promote our
multicultural richness

5.0 THE GOALS



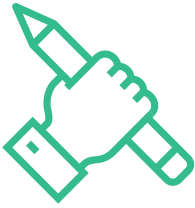
To maximize the general population's discovery of and access to arts and culture.



Install a prominent presence of the arts in various urban and natural spaces throughout Rawdon.



Recognize and have the Municipality of Rawdon recognized as a cultural destination.



AREA OF INTERVENTION 1

Develop and support a partnership between artists, institutions and the community.

ACTION 1.1

Support meetings and exchanges between artists, artisans, cultural organizations, presenters and other cultural workers.

ACTION 1.2

Carry out cultural activities with local artists and artisans.



AREA OF INTERVENTION 2

Support and encourage artistic practices and the development of artistic places.

ACTION 2.1

Develop places and partnerships for cultural practice.

ACTION 2.2

Encourage the creation and influence of cultural organizations, within the Rawdon community.

ACTION 2.3

Showcase the artists and artisans of Rawdon, of Lanaudière and moreover in public places throughout the municipality.

ACTION 2.4

Promote the green spaces of Rawdon for their cultural value.



AREA OF INTERVENTION 3

Highlight Rawdon's cultural heritage which is made up of groups, people, places and historic events, buildings, heritage objects and sites, cultural heritage landscapes and intangible heritage.

ACTION 3.1

Carry out an inventory and showcase Rawdon's distinctive cultural heritage.

ACTION 3.2

Develop and promote a tour of Rawdon's heritage attractions.

ACTION 3.3

Make young people aware of their history and their heritage.



